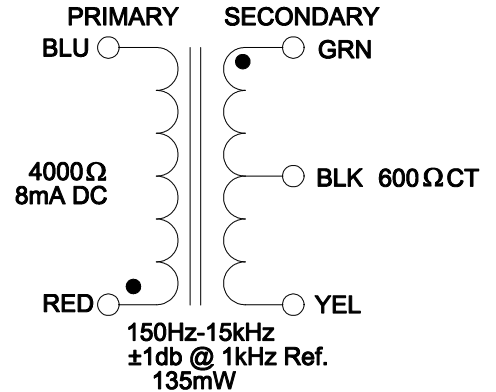
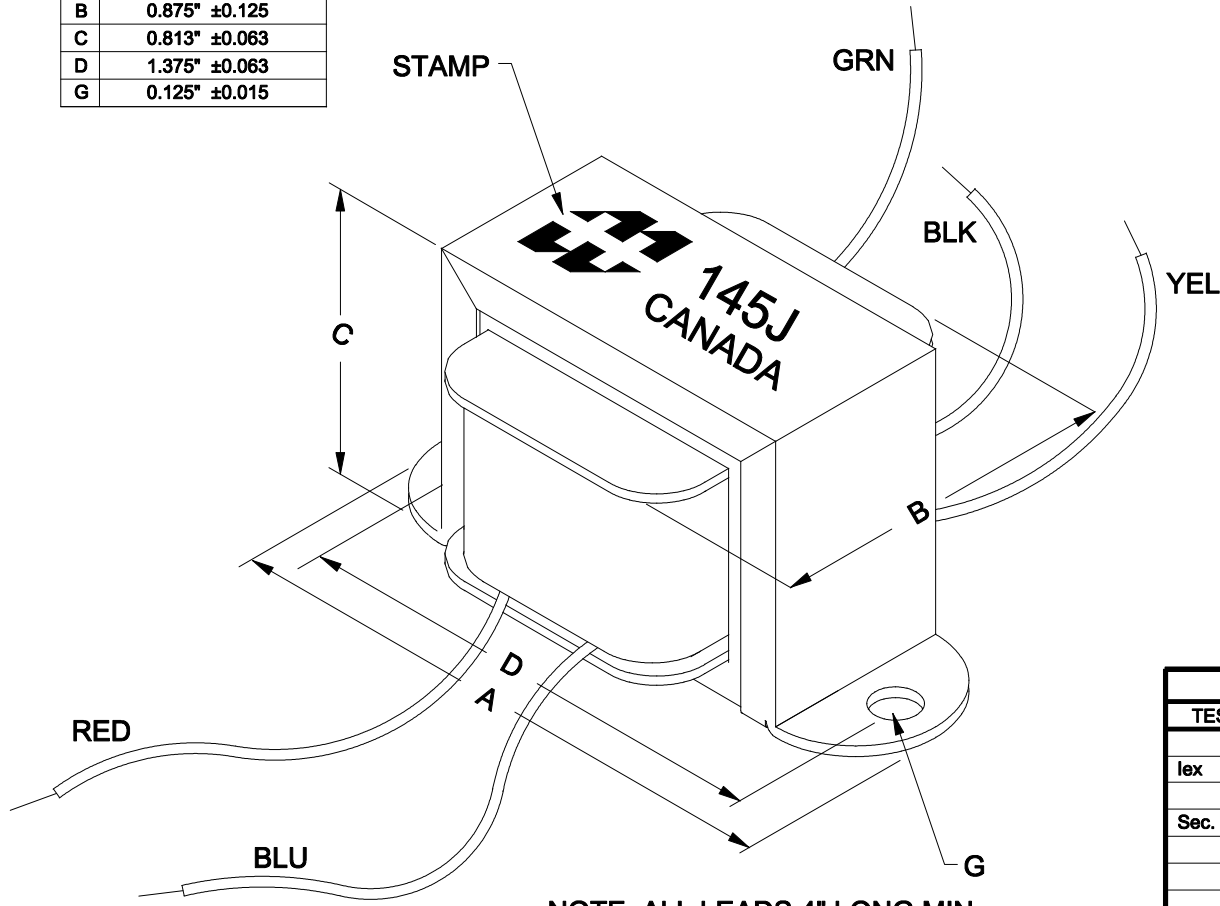


DIMENSIONS:	
A	1.625" ±0.063
B	0.875" ±0.125
C	0.813" ±0.063
D	1.375" ±0.063
G	0.125" ±0.015



NOTE: ALL LEADS 4" LONG MIN.

ELECTRICAL DATA:		
TESTS	CONDITIONS	ACCEPTANCE CRITERIA
Iex	@ 30V, 200Hz, BLU - RED	12mA Max.
Sec. N.L.V	@ 30V, 200Hz, BLU - RED	
	GRN - BLK = BLK - YEL =	5.800 V ±2%
	GRN - YEL =	11.60 V ±2%
DCR	@ 20°C, BLU - RED =	332.1 Ω ±15%
	@ 20°C, GRN - YEL =	11.50 Ω ±15%
HIPOT	PRIMARY - SECONDARY	500V, 60Hz, 1 SEC

REV.#	REVISION	DATE	HAMMOND MANUFACTURING™		ELECTRONIC DIVISION	
0	RELEASED.	C.I. 07/19/17	52 RANKIN PLACE, WATERLOO, ONTARIO, N2J 3Z5		PH # (519) 886-6181 FAX # (519) 886-9540	
			DWG. BY: C. ILIE	CHK'D BY:	TITLE: AUDIO TRANSFORMER	DWG. NO. 145J
			DATE: 07/19/17	APP'D. BY:		
				DIMENSIONS: IN(X) MM()		