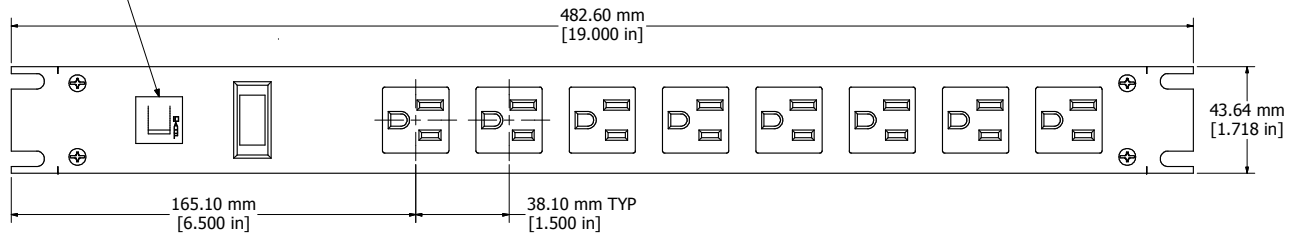
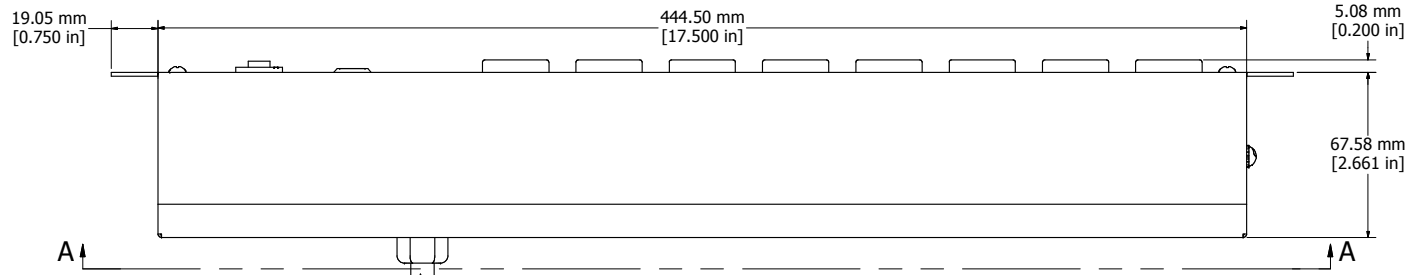


RESETABLE CIRCUIT BREAKER

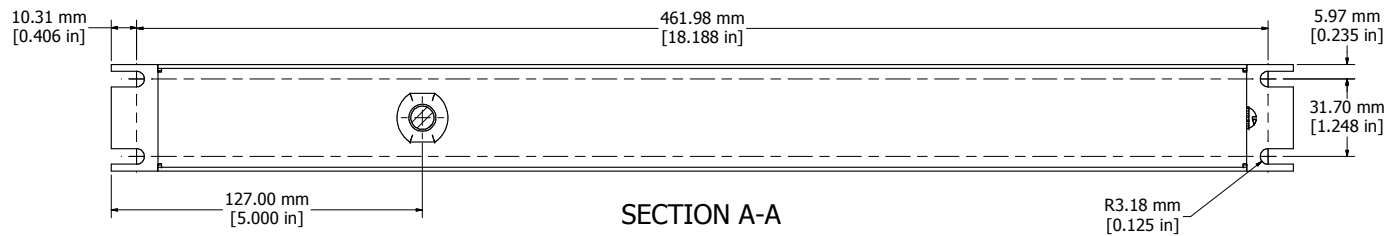


ASSEMBLY - VIEW FROM FRONT

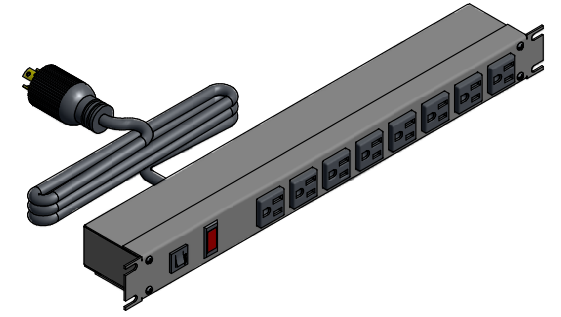


ASSEMBLY - VIEW FROM BOTTOM

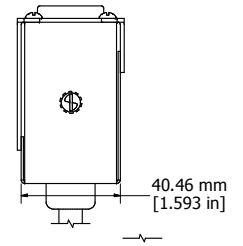
15' FOOT LOCKING POWER CORD (NEMA L5-15P)



SECTION A-A



ISOMETRIC VIEW



ASSEMBLY - VIEW FROM SIDE

<b>1582T8D1</b>
Finish - Front - ASA 61 Grey Painted Steel
Back - ASA 61 Grey Painted Steel
Rated - 125 VAC, 60 Hz, 15 Amps
Approvals - CSA Certified Standards C22.2 (No. 21-95, 42-99)
- UL Recognized Standard UL1363



**HAMMOND MANUFACTURING™**

**1582T8D1**

www.hammondmfg.com