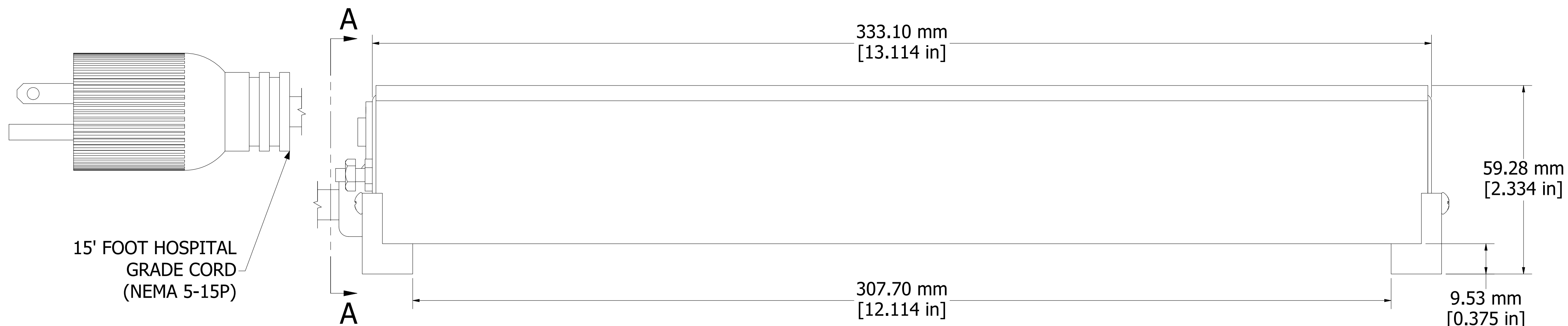
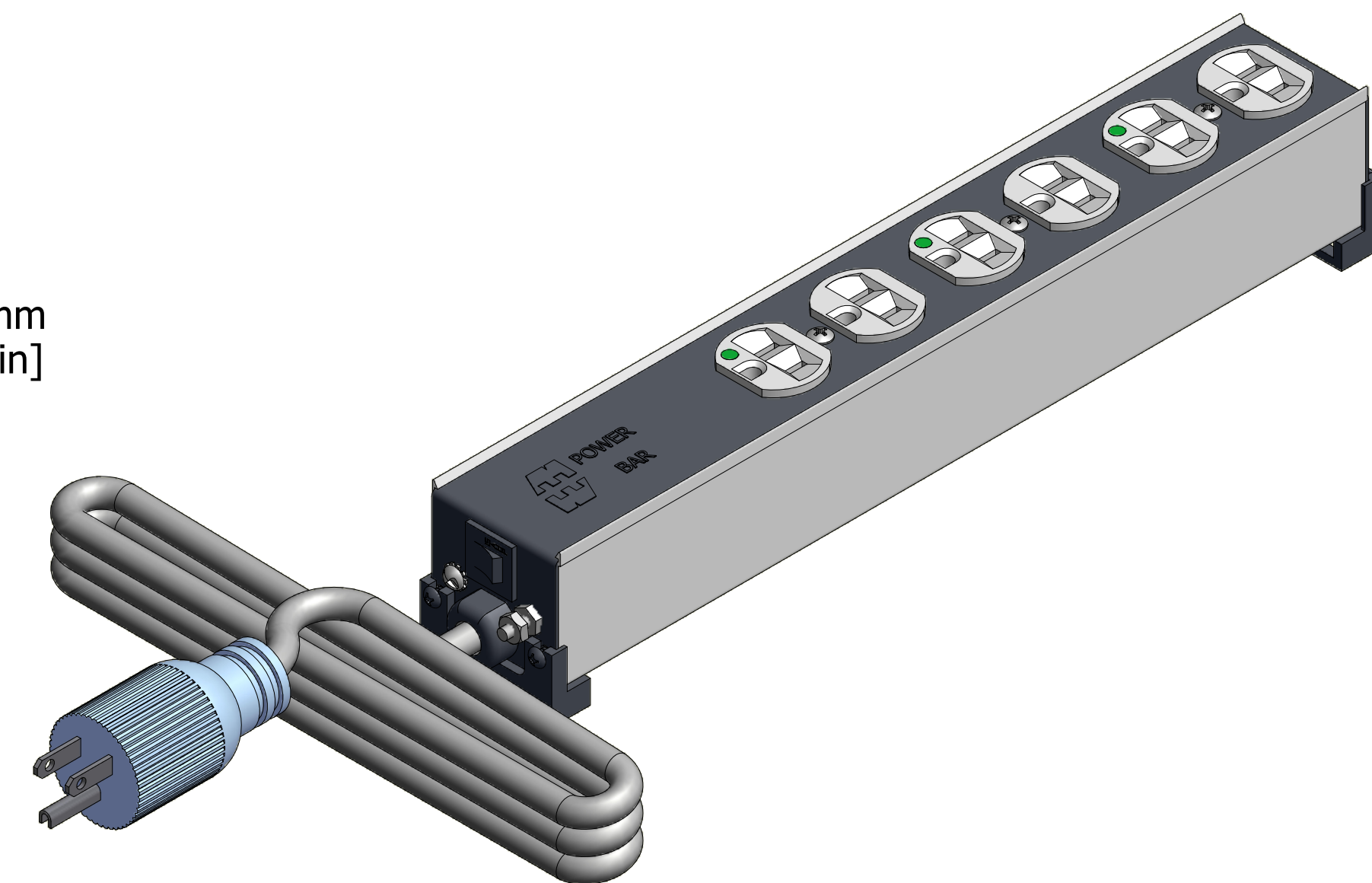
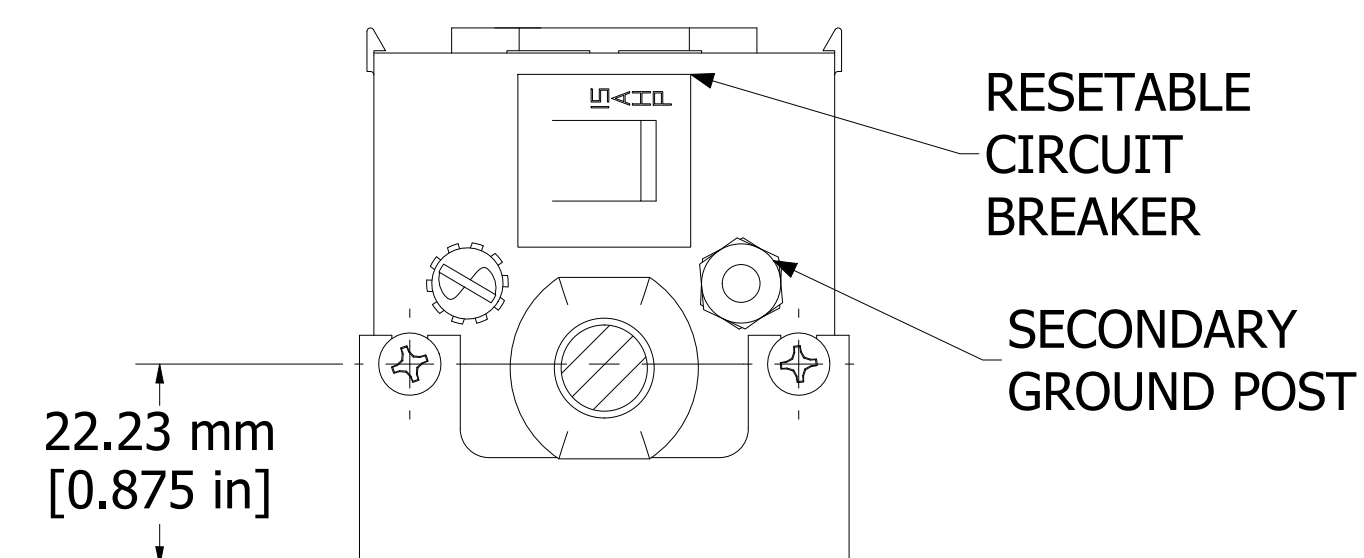


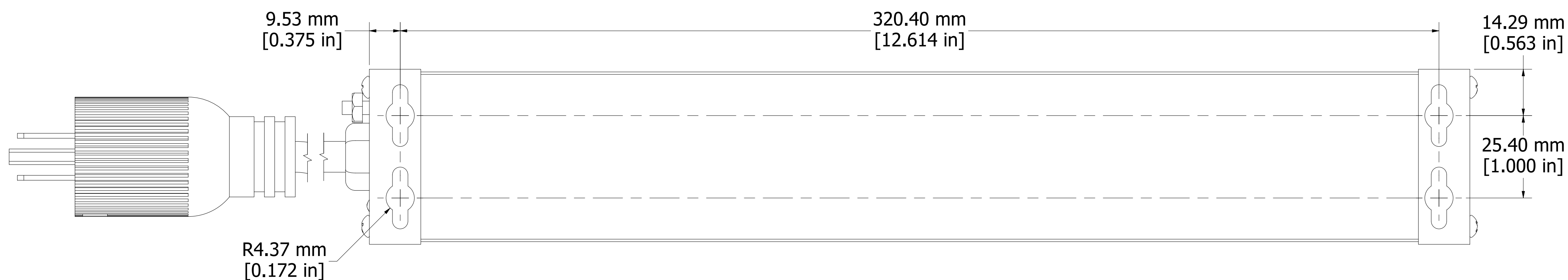
ASSEMBLY - VIEW FROM TOP



ASSEMBLY - VIEW FROM SIDE



SECTION A-A



ASSEMBLY - VIEW FROM BOTTOM

1584T6DH
Finish - Top - Black Painted Steel
Bottom - Aluminum Extrusion
Rated - 120 VAC, 60 Hz, 15 Amps
Approvals - CSA Certified Standards C22.2 (No. 21-95, 42-99),
Cord Sets no. 8 - Hospital Grade Powerbars
- TUVus Certified to UL60601-1 & UL1363

 **HAMMOND**
MANUFACTURING™
1584T6DH
www.hammondmfg.com