

ON/OFF  
POWER SWITCH

339.45 mm  
[13.364 in]

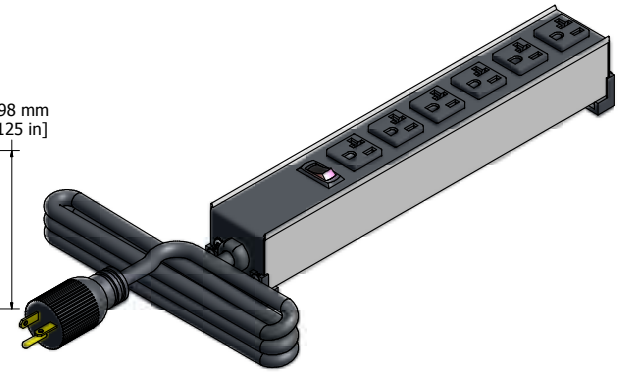
53.98 mm  
[2.125 in]

52.32 mm  
[2.060 in]

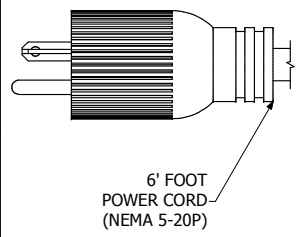
116.14 mm  
[4.573 in]

40.00 mm TYP  
[1.575 in]

ASSEMBLY - VIEW FROM TOP



ISOMETRIC VIEW



6' FOOT  
POWER CORD  
(NEMA 5-20P)

333.10 mm  
[13.114 in]

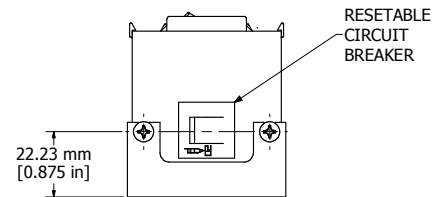
2.31 mm  
[0.091 in]

59.28 mm  
[2.334 in]

307.70 mm  
[12.114 in]

9.53 mm  
[0.375 in]

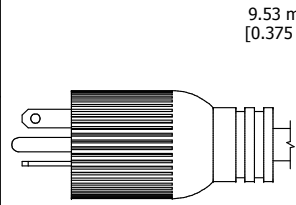
ASSEMBLY - VIEW FROM SIDE



RESETABLE  
CIRCUIT  
BREAKER

22.23 mm  
[0.875 in]

ASSEMBLY - VIEW FROM END



9.53 mm  
[0.375 in]

320.40 mm  
[12.614 in]

14.29 mm  
[0.563 in]

25.40 mm  
[1.000 in]

R4.37 mm  
[0.172 in]

ASSEMBLY - VIEW FROM BOTTOM

|  |
|--|
| <b>1589H6F1</b>  |
| Finish - Top - Black Painted Steel                           |
| Bottom - Aluminum Extrusion                                  |
| Rated - 120 VAC, 60 Hz, 20 Amps                              |
| Approvals - CSA Certified Standards C22.2 (No. 21-95, 42-99) |
| - UL Listed, Standard UL1363                                 |

**HAMMOND  
MANUFACTURING™**

**1589H6F1**

www.hammondmfg.com