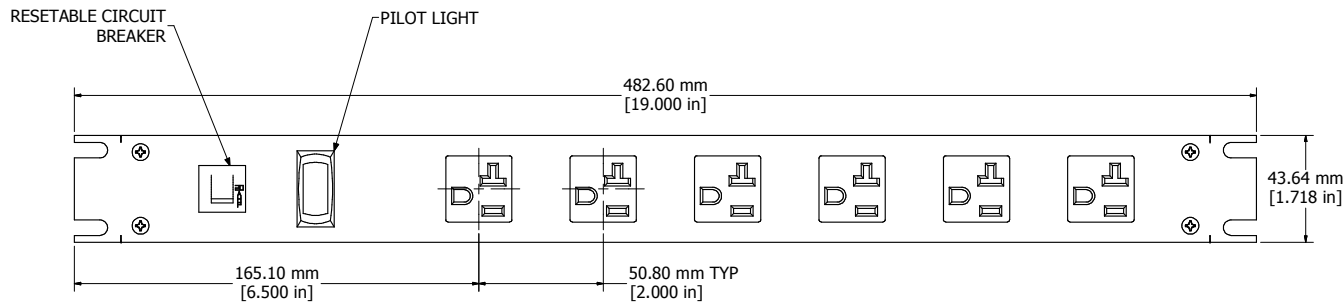
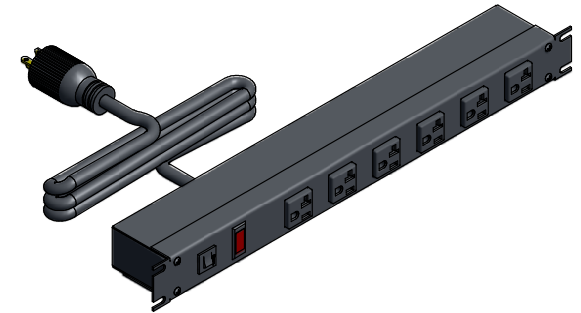


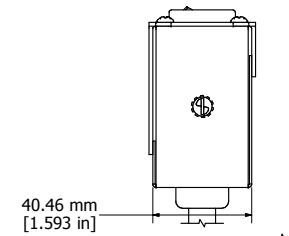
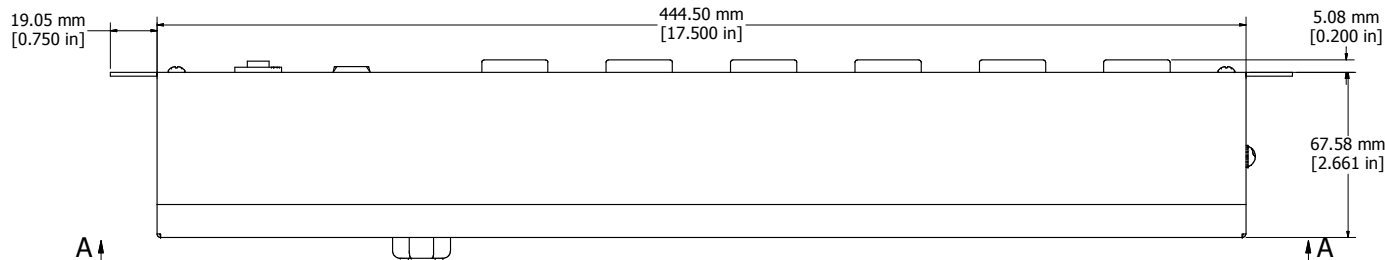
8 | 7 | 6 | 5 | 4 | 3 | 2 | 1



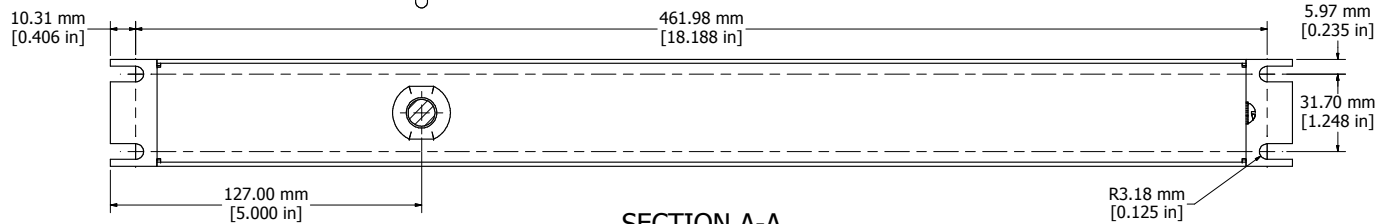
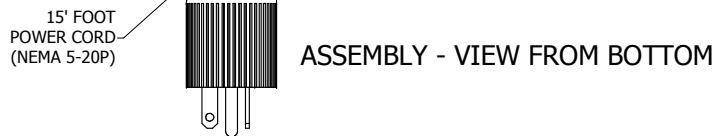
ASSEMBLY - VIEW FROM FRONT



ISOMETRIC VIEW



ASSEMBLY - VIEW FROM SIDE



<b>1589T6G1BKRF</b>	
Finish - Front - Black Painted Steel	
Back - Black Painted Steel	
Rated - 125 VAC, 60 Hz, 20 Amps	
Approvals - CSA Certified Standards C22.2 (No. 21-95, 42-99)	
- UL Recognized Standard UL 1363	



8 | 7 | 6 | 5 | 4 | 3 | 2 | 1