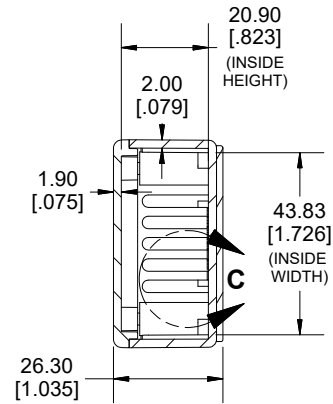
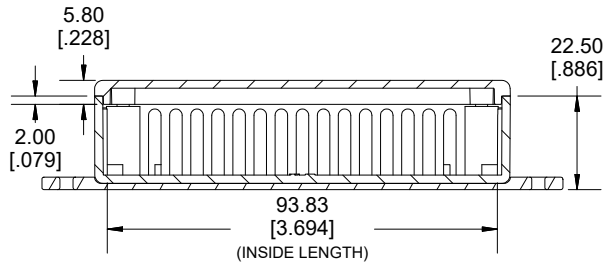
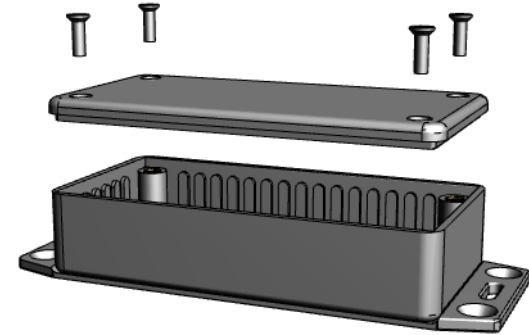


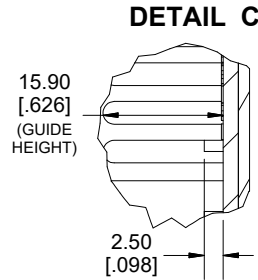
**TOP VIEW**



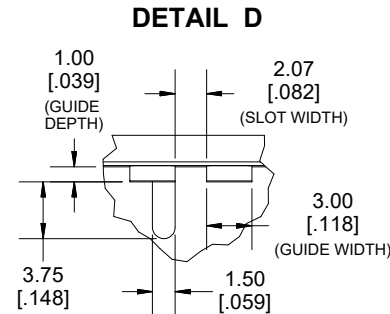
**SECTION A-A**



**SECTION B-B  
SIDE VIEW**



**DETAIL C**



**DETAIL D**

Enclosures can be Factory Modified (Milling, Drilling, Printing etc.)  
 Contact Factory ([modshop@hammfg.com](mailto:modshop@hammfg.com)) for quotes  
 Solid models of this enclosure available in .stp or .x\_t  
 (Part number and text placement/orientation on our products are subject to change,  
 we do not recommend using them as a locating reference for modification purposes)

**NOTE**

Purchased assembly includes box, lid, 4 cover screws, and pre-installed brass inserts.  
 Enclosure made from FRABS

**Recommended Torque: 42-57 ozf.in (30-40 cN.m)**

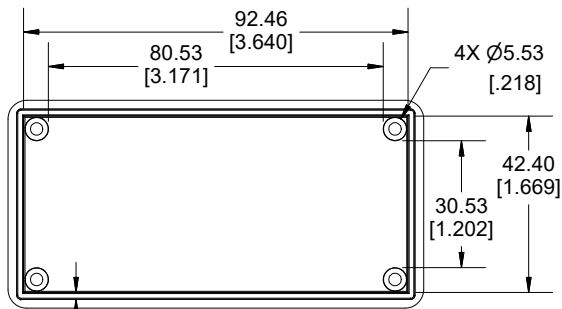
**PART NUMBERS**

**1591A Enclosure**

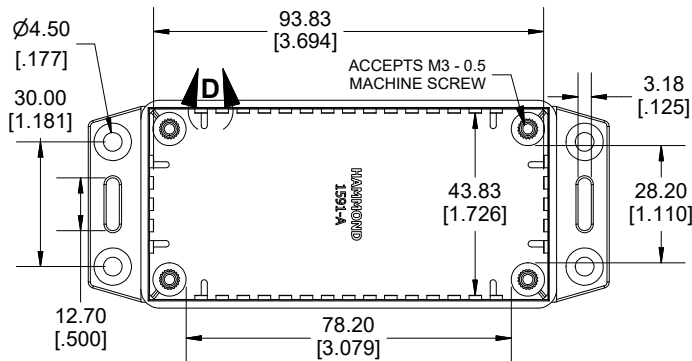
Flame Retardant ABS Black	1591AF2BK
Flame Retardant ABS Grey	1591AF2GY

**Accessories**

Plated Cover screw M3 - 0.5 X 10mm (100Pkg)	1591MS100 (Silver) 1591MS100BK (Black)
PC Board Card Adapters	1591Z6 (6Pkg)
	1591Z50 (50 Pkg)
Nylon Belt / Pocket clip	1591Z100 (100Pkg)
	1599CLIP (Black) 1599CLIPGY (Grey)
Clear Lids - Flame Retardant Polycarbonate - Lid ONLY	1591AC

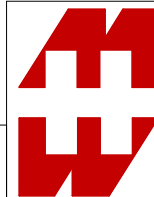


**INSIDE LID**



**INSIDE BOX**

Dimensions:  
mm  
[inches]



**HAMMOND  
MANUFACTURING.**

**1591AF2**

[www.hammondmfg.com](http://www.hammondmfg.com)