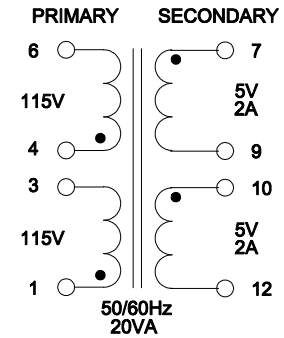
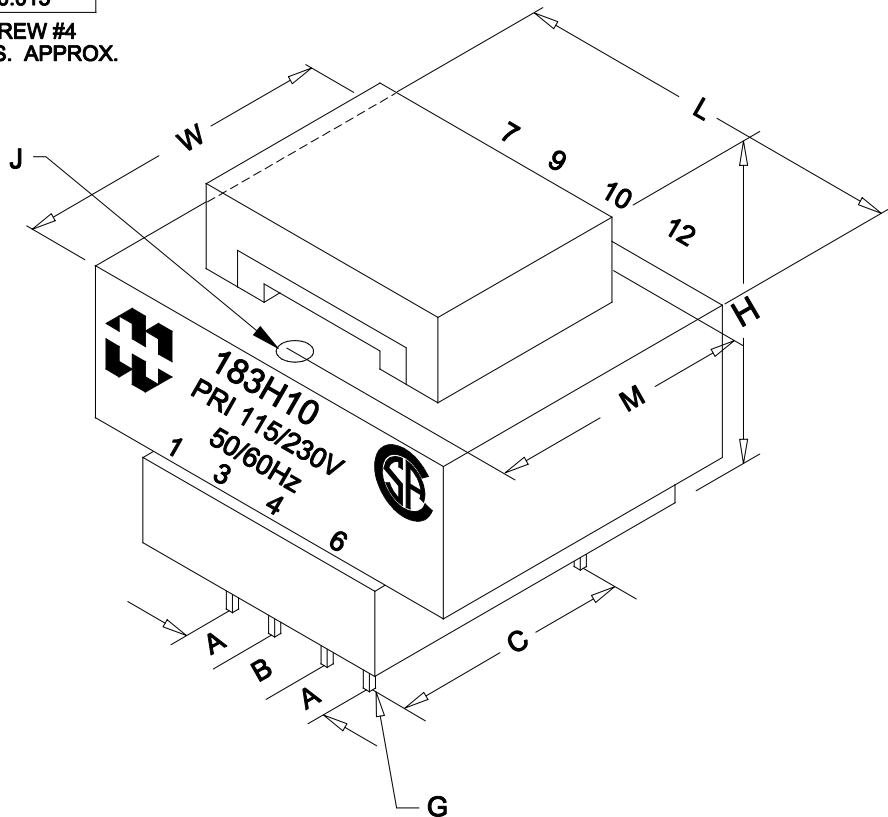


DIMENSIONS:	
A	0.400" ±0.031
B	0.400" ±0.031
C	1.460" ±0.031
L	2.250" ±0.063
W	1.875" ±0.063
H	1.625" ±0.063
G	0.036" SQ. ±0.005
J	0.125" ±0.005
M	1.500" ±0.015

MOUNTING SCREW #4
WEIGHT: 0.90LBS. APPROX.



ELECTRICAL DATA:		
TESTS	CONDITIONS	ACCEPTANCE CRITERIA
lex	@ 115V, 60Hz, PIN 1 - PIN 3	64.8mA Max.
Sec. N.L.V	@ 115V, 60Hz, PIN 1 - PIN 3	
	PIN 4 - PIN 6 =	115.0V ±2%
	PIN 7 - PIN 9 =	6.027V ±2%
	PIN 10 - PIN 12 =	6.150V ±2%
DCR	@ 20°C, PIN 1 - PIN 3 =	76.59 Ω ±20%
	@ 20°C, PIN 4 - PIN 6 =	91.50 Ω ±20%
	@ 20°C, PIN 7 - PIN 9 =	0.197 Ω ±20%
	@ 20°C, PIN 10 - PIN 12 =	0.244 Ω ±20%
HIPOT	PRIMARY - SECONDARY	4000V, 60Hz, 1 SEC

REV.#	REVISION	DATE	HAMMOND ELECTRONIC DIVISION	
0	RELEASED.	C.I. 07/06/22	52 RANKIN PLACE, WATERLOO, ONTARIO, N2J 3Z5	
			PH # (519) 886-6181	FAX # (519) 886-9540
			DWG. BY: C. ILIE	CHK'D BY:
			DATE: 07/06/22	APP'D. BY:
			TITLE: CHASSIS MOUNT POWER TRANSFORMER	
			DIMENSIONS: IN(X) MM()	
			DWG. NO. 183H10	