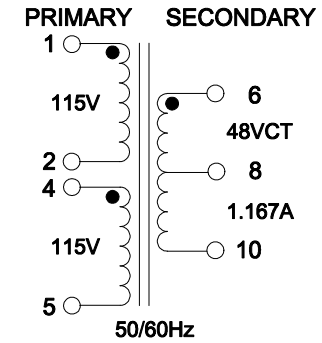
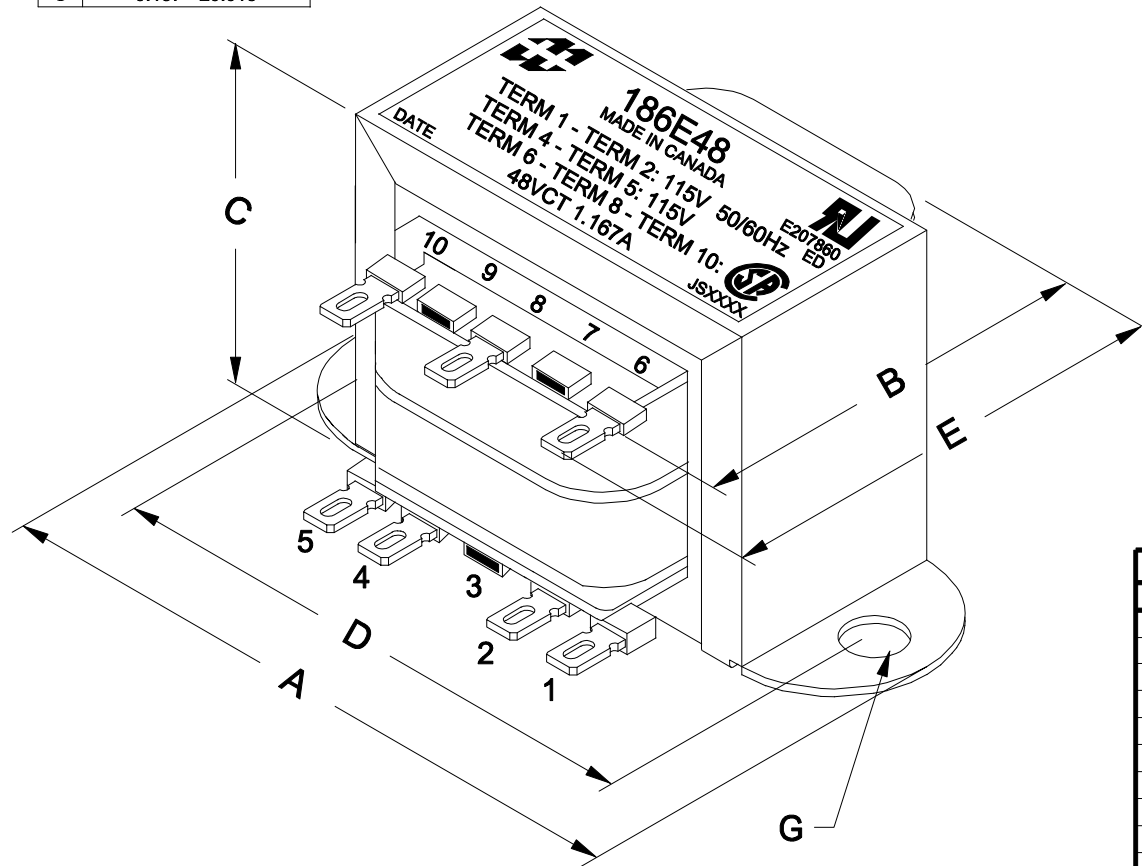


DIMENSIONS:

A	3.688" ±0.063
B	1.850" ±0.125
C	2.308" ±0.063
D	3.125" ±0.063
E	2.209" ±0.063
G	0.187" ±0.015



FOR 230V:
CONNECT PIN 2 & PIN 4 TOGETHER
INPUT VOLTAGE ON PIN 1 TO PIN 5

FOR 115V:
CONNECT PIN 1 & PIN 4 TOGETHER
CONNECT PIN 2 & PIN 5 TOGETHER
INPUT VOLTAGE ON PIN 1 TO PIN 2

ELECTRICAL DATA:

TESTS	CONDITIONS	ACCEPTANCE CRITERIA
I _{ex}	@ 115V, 60Hz, TERM 1 - TERM 2	127.2mA Max.
Sec. N.L.V	@ 115V, 60Hz, TERM 1 - TERM 2	
	TERM 4 - TERM 5 =	115.0V ±2%
	TERM 6 - TERM 10 =	54.86V ±2%
	TERM 6 - TERM 8 = TERM 8 - TERM 10 =	27.43V ±2%
DCR	@ 20°C, TERM 1 - TERM 2 =	17.12 Ω ±20%
	@ 20°C, TERM 3 - TERM 4 =	20.50 Ω ±20%
	@ 20°C, TERM 6 - TERM 8 =	2.138 Ω ±20%
HIPOT	PRIMARY - SECONDARY	2500V, 60Hz, 1 SEC

REV.#	REVISION	DATE	HAMMOND ELECTRONIC DIVISION			
0	RELEASED.	C.I. 03/21/23	MANUFACTURING™ 52 RANKIN PLACE, WATERLOO, ONTARIO, N2J 3Z5			
			DWG. BY: C. ILIE	CHK'D BY:	TITLE: POWER TRANSFORMER	DWG. NO. 186E48
			DATE: 03/21/23	APP'D. BY:		
				DIMENSIONS: IN(X) MM()		

PH # (519) 886-6181
FAX # (519) 886-9540