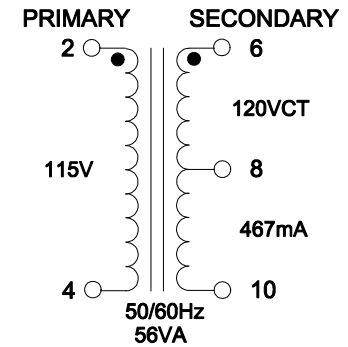
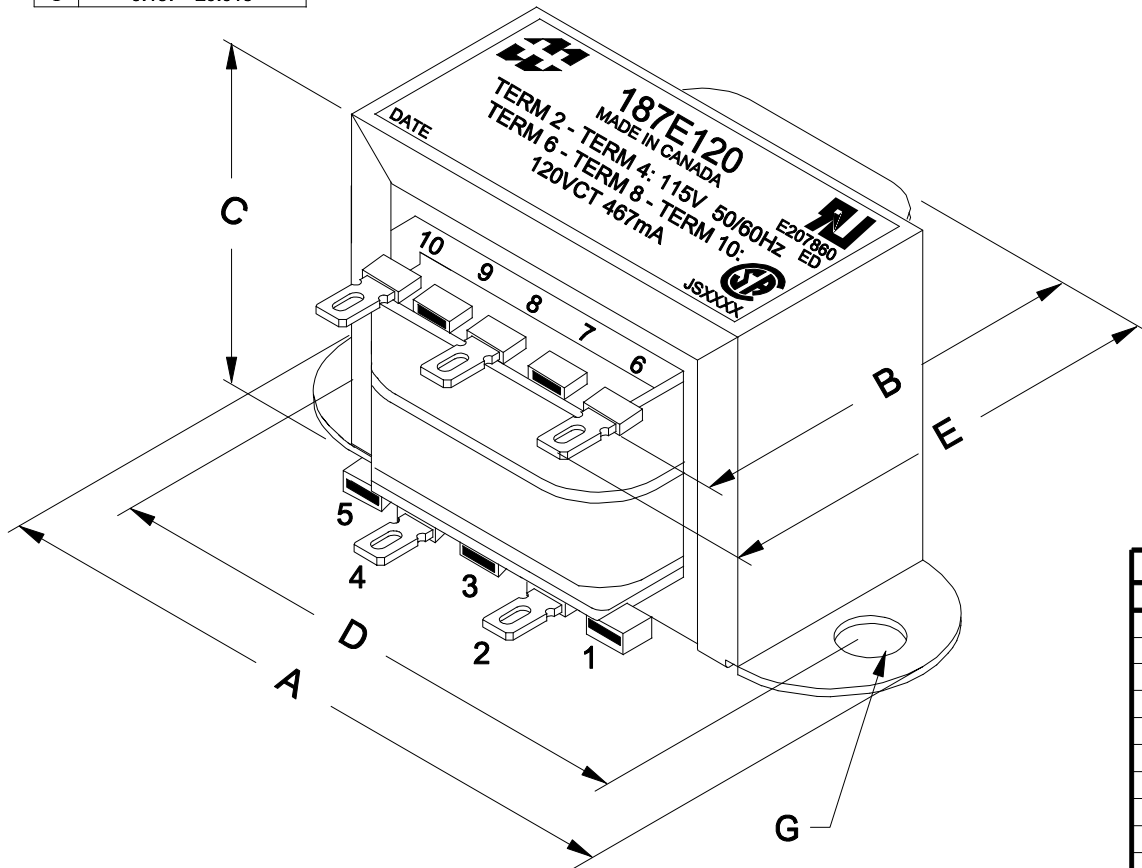


DIMENSIONS:	
A	3.688" ±0.063
B	1.850" ±0.125
C	2.308" ±0.063
D	3.125" ±0.063
E	2.209" ±0.063
G	0.187" ±0.015



ELECTRICAL DATA:		
TESTS	CONDITIONS	ACCEPTANCE CRITERIA
I _{ex}	@ 115V, 60Hz, TERM 2 - TERM 4	81.6mA Max.
Sec. N.L.V	@ 115V, 60Hz, TERM 2 - TERM 4	
	TERM 6 - TERM 10 =	134.9V ±2%
	TERM 6 - TERM 8 = TERM 8 - TERM 10 =	67.47V ±2%
DCR	@ 20°C, TERM 2 - TERM 4 =	10.22 Ω ±20%
	@ 20°C, TERM 6 - TERM 10 =	14.95 Ω ±20%
HIPOT	PRIMARY - SECONDARY	1500V, 60Hz, 1 SEC

REV.#	REVISION	DATE	HAMMOND ELECTRONIC DIVISION	
0	RELEASED.	C.I. 08/06/21	MANUFACTURING™ 52 RANKIN PLACE, WATERLOO, ONTARIO, N2J 3Z5	
			PH # (519) 886-6181	FAX # (519) 886-9540
			DWG. BY: C. ILIE	CHK'D BY:
			DATE: 08/06/21	APP'D. BY:
			DIMENSIONS: IN(X) MM ()	
			TITLE: POWER TRANSFORMER	DWG. NO. 187E120