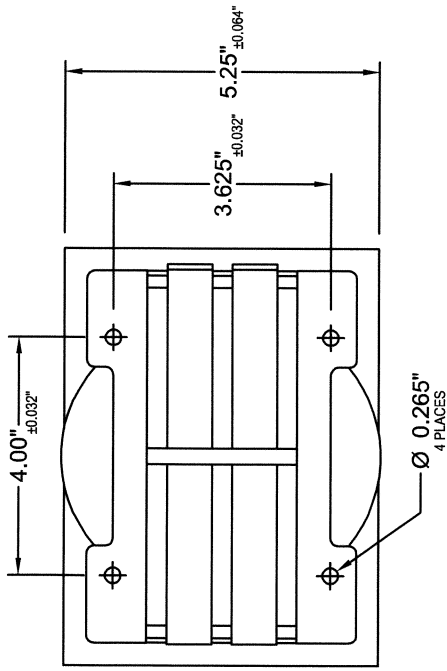
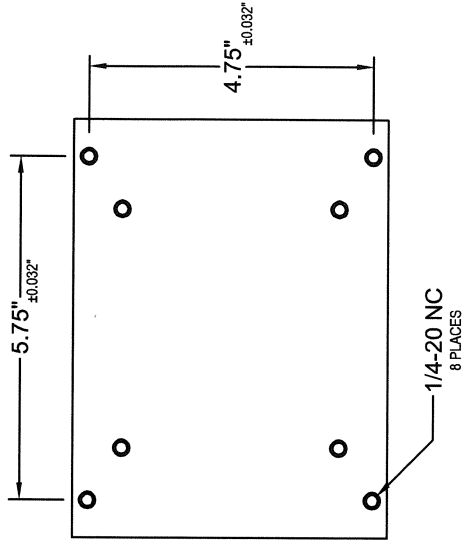


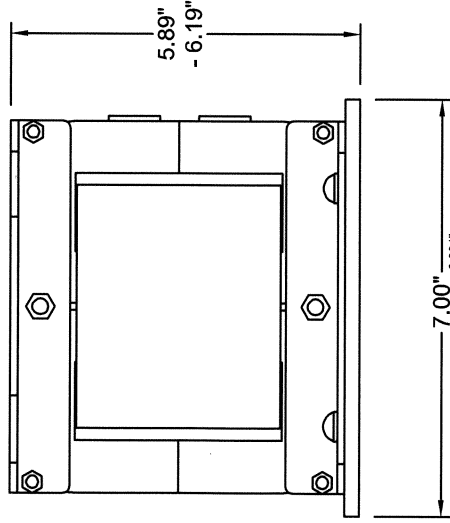
TOP VIEW:



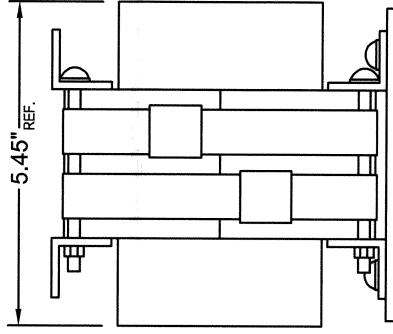
**MOUNTING:
MOUNTING:**



SIDE VIEW:



END VIEW:



WEIGHT: 32.75lbs

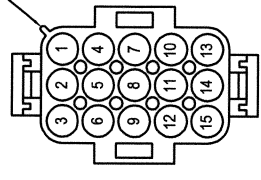
PROPERTY AND COPYRIGHT NOTICE

THIS DRAWING AND THE INFORMATION IT CONVEYS ARE THE PROPERTY OF HAMMOND MANUFACTURING. IT MAY NOT BE REPRODUCED, TRANSMITTED OR USED IN ANY MANNER WHATSOEVER WITHOUT THE WRITTEN PERMISSION OF HAMMOND MANUFACTURING.

REV	NOTES	BY	DATE

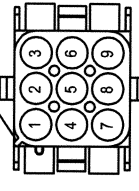
HAMMOND ELECTRONIC DIVISION 52 BANKIN PLACE WATERLOO, ONTARIO, N2J 3Z5 PHONE: 519.886.6181 FAX: 519.886.9540	
DAHL: POWER TRANSFORMER ALPHA 76A FOR MODELS 76A, 76PA, 76CA AND 78	
DRAWN G. GRAY	DATE 03/06/2018
APPROVED	DATE
PWDP13139	
PAGE 1 OF 2	

KEY FOR PIN 1

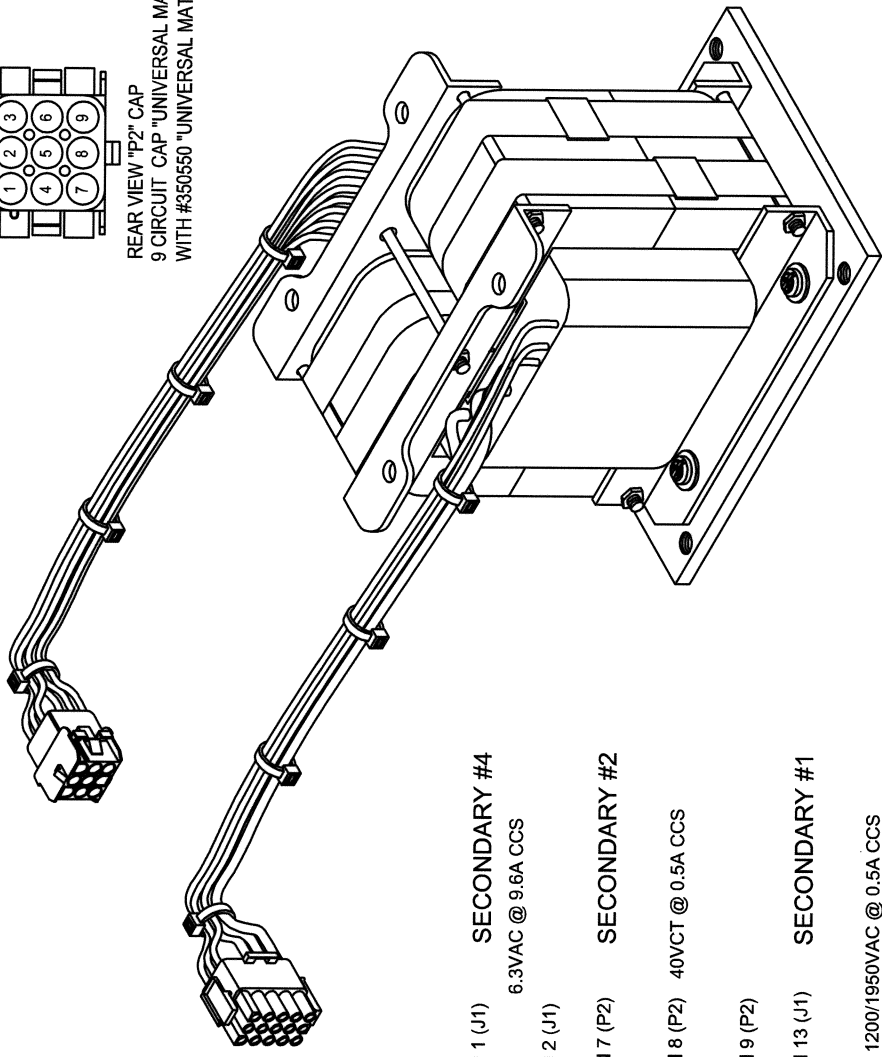


REAR VIEW "J1" PLUG
15 CIRCUIT PLUG "UNIVERSAL MATE-N-LOK"
WITH #350547 "UNIVERSAL MATE-N-LOK" PINS

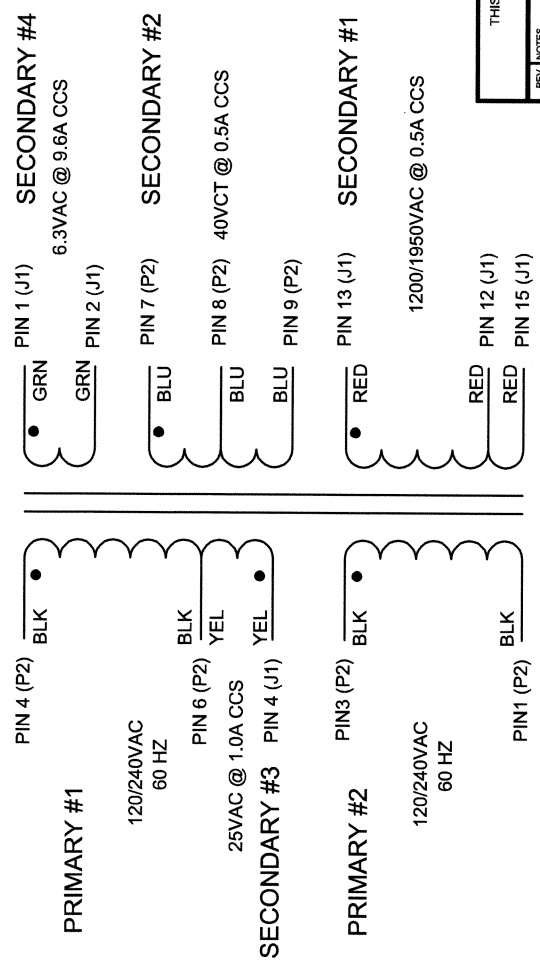
LEADS ARE APPROXIMATELY 12" OUT FROM COIL



RIB TO INDICATE PIN 1
REAR VIEW "P2" CAP
9 CIRCUIT CAP "UNIVERSAL MATE-N-LOK"
WITH #350550 "UNIVERSAL MATE-N-LOK" SOCKETS



ELECTRICAL DIAGRAM:



PROPERTY AND COPYRIGHT NOTICE
THIS DRAWING AND THE INFORMATION IT CONVEYS ARE THE PROPERTY OF HAMMOND MANUFACTURING. IT MAY NOT BE REPRODUCED,
TRANSMITTED OR USED IN ANY MANNER WHATSOEVER WITHOUT THE WRITTEN PERMISSION OF HAMMOND MANUFACTURING.

REV	NOTES	BY	DATE
<p>PROPERTY AND COPYRIGHT NOTICE THIS DRAWING AND THE INFORMATION IT CONVEYS ARE THE PROPERTY OF HAMMOND MANUFACTURING. IT MAY NOT BE REPRODUCED, TRANSMITTED OR USED IN ANY MANNER WHATSOEVER WITHOUT THE WRITTEN PERMISSION OF HAMMOND MANUFACTURING.</p>			
<p>HAMMOND ELECTRONICS DIVISION MANUFACTURING, 52 BALCON PL. UNIT 10 WATERLOO, ONTARIO, N2J 3Z5 PHONE: 519.886.8181 FAX: 519.886.9540</p>			
<p>DAHL: POWER TRANSFORMER ALPHA 76A FOR MODELS 76A, 76PA, 76CA AND 78</p>			
APPROVED	DATE	NUMBER	
G. GRAY	03/06/2018		
			PWDP13139
			PAGE 2 OF 2