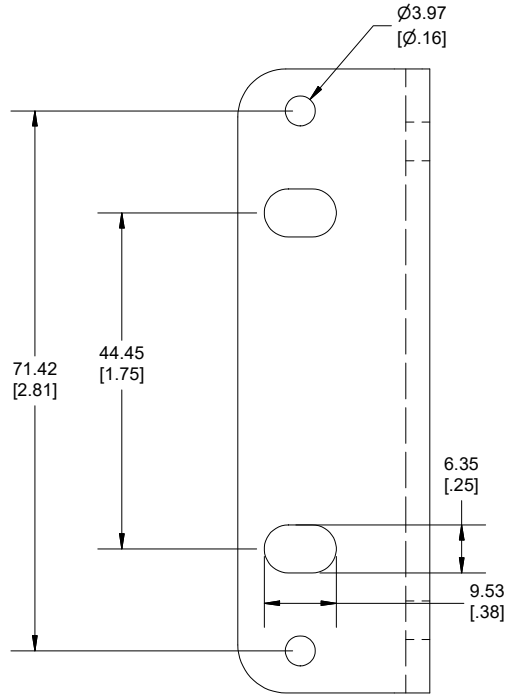
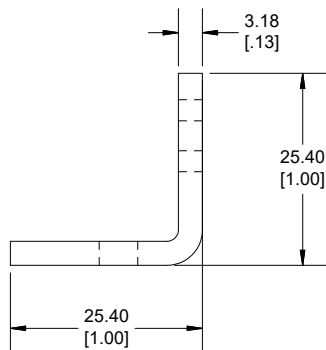
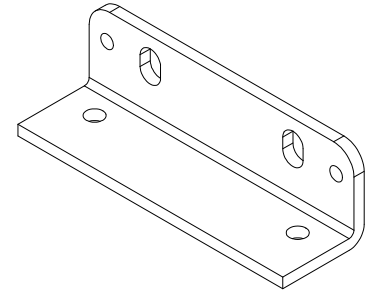


Ø5.11
[Ø.20]



Ø3.97
[Ø.16]



Enclosures can be Factory Modified (Milling, Drilling, Printing etc.)
 Contact Factory (modshop@hammfg.com) for quotes
 Solid models of this enclosure available in .stp or .x_t
 (Part number and text placement/orientation on our products are subject to change,
 we do not recommend using them as a locating reference for modification purposes)



**HAMMOND
MANUFACTURING®**
RMCFLANGE2U
www.hammondmfg.com

Dimensions:
mm
[inches]