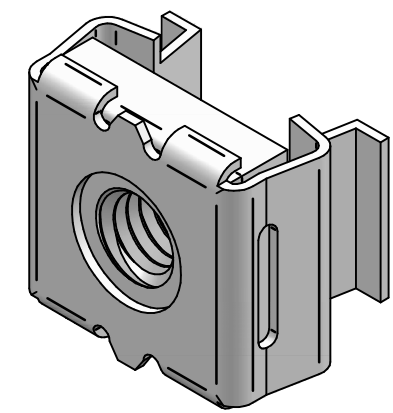
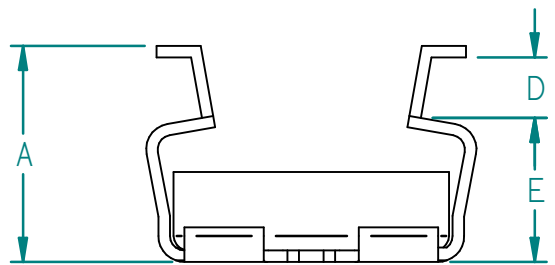


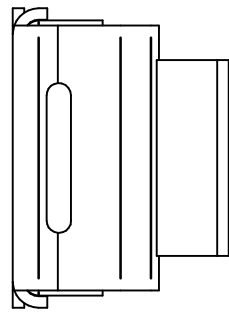
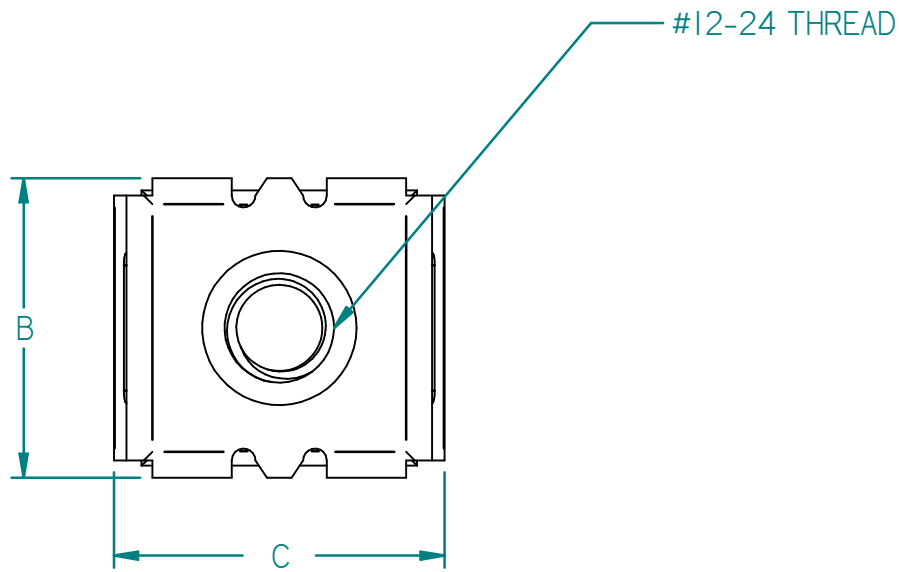
MATERIAL: SPRING STEEL  
 HARDNESS: N/A  
 HEAT TREATMENT: AUSTEMPER 40-45 R/C  
 FINISH: ZINC PLATED

REV	ECN	DESCRIPTION	DATE	ENGR	CHK'D
A	N/A	RELEASED	NOV 03-21	SD	PB

FOR USE WITH 0.064" TO 0.105" PANEL THICKNESS



ISOMETRIC VIEW



\*NOTES: ALL DIMENSIONS ARE IN MM  
 IMAGES ARE FOR ILLUSTRATION PURPOSE ONLY  
 DATA SUBJECT TO CHANGE WITHOUT NOTICE

A	9.7
B	13.2
C	13.7
D	3.0
E	6.7

UNLESS OTHERWISE SPECIFIED  
 ALL DIMENSIONS ARE SHOWN IN INCHES.

DIMENSION	UNDER 6"	6" TO 24"	24" TO 48"	OVER 48"
FRACTION	± 1/32"	± 3/64"	± 1/16"	± 1/8"
.XX	± 0.04"	± 0.05"	± 0.06"	± 0.13"
.XXX	± 0.025"	± 0.020"	± 0.020"	± 0.030"
HOLE	± 0.005"			
ANGLE	± 1°			

DWN	sdai
DATE	3-Nov-2021
CHK.	
AUTH.	
MAT'L	
CAD DATA ONLY: DO NOT MANUALLY UPDATE	

n/a	n/a	<b>PART No. CAGNUT1224</b>
MODIFIED FROM	NEXT ASSEMBLY	
<b>HAMMOND MANUFACTURING CO. LTD</b> Enclosure Group		
THIS DRAWING IS PROPRIETARY INFORMATION OF HAMMOND MFG. CO. LTD. NOT TO BE USED WITHOUT EXPRESSED WRITTEN PERMISSION OF HAMMOND MFG. CO. LTD.		
TITLE:		<b>CAGE NUT</b>
SCALE: 3:1	DWG: NTS18097	SHEET: 1 OF 1