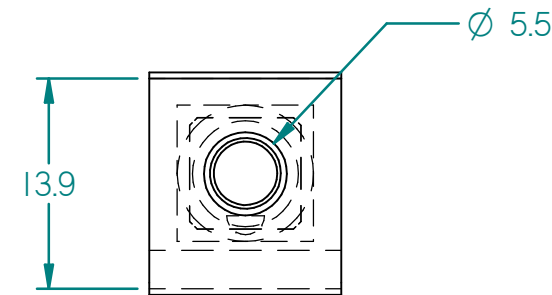
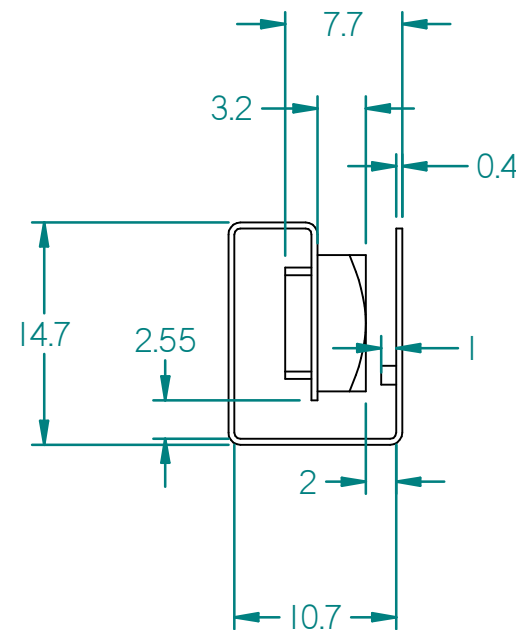
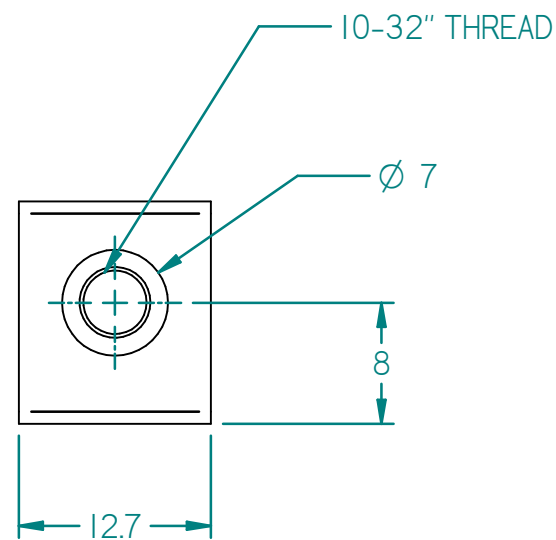
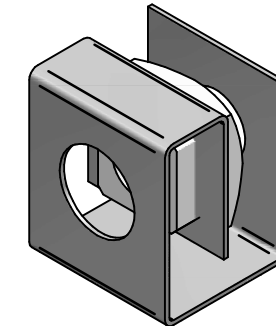


MATERIAL: SAE 1050-1065
 HARDNESS: HRC 38-42
 HEAT TREATMENT: AUSTEMPER
 FINISH: ZINC PLATED CR3
 10-32 STAMPED ON BOTTOM

REV	ECN	DESCRIPTION	DATE	ENG'R	CHK'D
A	N/A	RELEASED	18 AUG-16	KS	PB

RECOMMENDED FOR USE WITH .06"-.08" PANEL THICKNESS



*NOTE ALL DIMENSIONS ARE IN MM
 UNLESS OTHERWISE STATED

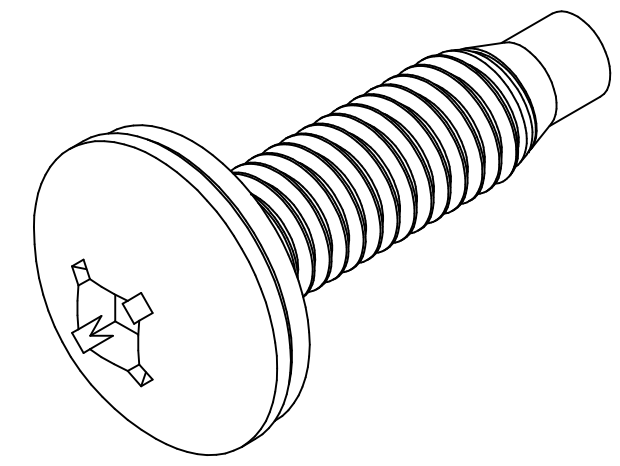
UNLESS OTHERWISE SPECIFIED
 ALL DIMENSIONS ARE SHOWN IN INCHES.

TOLERANCES - UNLESS OTHERWISE INDICATED:				
DIMENSION	UNDER 6"	6" TO 24"	OVER 24"	OVER 48"
FRACTION	± 1/32"	± 3/64"	± 1/16"	± 1/8"
.XX	± 0.04"	± 0.05"	± 0.06"	± 0.13"
.XXX	± 0.020"	± 0.020"	± 0.020"	± 0.030"
HOLE Ø	± 0.005"			
ANGLE	± 1°			

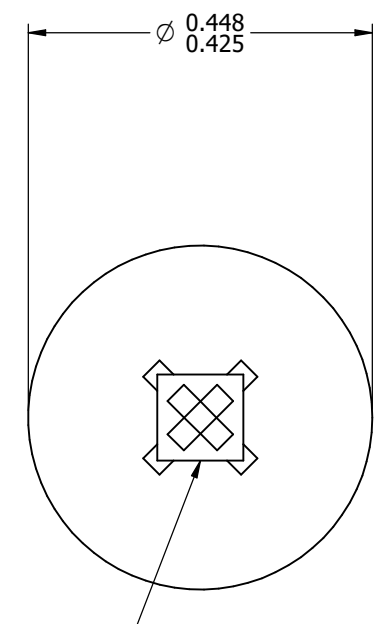
DWN	ksmith	SHEET SIZE	PART No. CLPKIT1032	
DATE	18-aug-2016	B	HAMMOND MANUFACTURING CO. LTD Enclosure Group	
CHK.			THIS DRAWING IS PROPRIETARY INFORMATION OF HAMMOND MFG. CO. LTD. NOT TO BE USED WITHOUT EXPRESSED WRITTEN PERMISSION OF HAMMOND MFG. CO. LTD.	
AUTH.			TITLE: 1421NP CLIP NUT	
MAT'L	SAE 1050-1065		SCALE: 2:1	DWG: NTS165221 SHEET: 1 OF 1
CAD DATA ONLY: DO NOT MANUALLY UPDATE				

Screw Material: 1022 Low Carbon Steel
 Screw Finish: Black Oxide
 Washer Material: Black Nylon 6/6
 Washer Inside Diameter: 0.203" Reference
 Washer Outside Diameter: 0.429"-0.445"
 Washer Thickness: 0.024"-0.040"
 Washer Must Remain Captive and Free to Rotate
 Must Be RoHS And Reach Compliant
 Harden Per ASME B18.6.3 - Latest Revision - Through Harden: RC 25-38
 Screw Can Be Fully Threaded

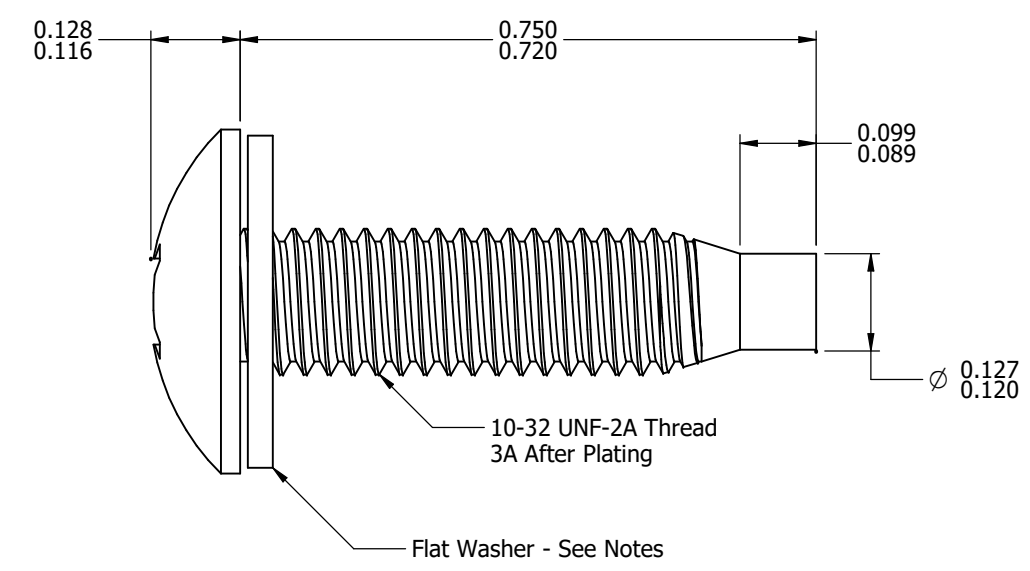
REV	ECN	DESCRIPTION	DATE	ENGR	CHK'D
A	N/A	RELEASED	JAN 14-22	MO	PB



ISOMETRIC VIEW



Quadrex
 #2R Type-III Square Recess
 Penetration Gaging Depth: 0.068"-0.080"
 #2 Phillips/Square Recess
 Penetration Gaging Depth: 0.088"-0.100"



*NOTES: ALL DIMENSIONS ARE IN INCHES
 IMAGES ARE FOR ILLUSTRATION PURPOSE ONLY
 DATA SUBJECT TO CHANGE WITHOUT NOTICE

UNLESS OTHERWISE SPECIFIED
 ALL DIMENSIONS ARE SHOWN IN INCHES.

TOLERANCES - UNLESS OTHERWISE INDICATED:				
DIMENSION	UNDER 6"	6" TO 24"	OVER 24"	OVER 48"
FRACTION	± 1/32"	± 3/64"	± 1/16"	± 1/8"
.XX	± 0.04"	± 0.05"	± 0.06"	± 0.13"
.XXX	± 0.025"	± 0.020"	± 0.020"	± 0.030"
HOLE	± 0.005"			
ANGLE	± 1°			

n/a		n/a		PART No. CLPKIT1032
MODIFIED FROM		NEXT ASSEMBLY		
DWN	mojikutu	SHEET SIZE	HAMMOND MANUFACTURING CO. LTD Enclosure Group	
DATE	14-Jan-2022	B	THIS DRAWING IS PROPRIETARY INFORMATION OF HAMMOND MFG. CO. LTD. NOT TO BE USED WITHOUT EXPRESSED WRITTEN PERMISSION OF HAMMOND MFG. CO. LTD.	
CHK.			TITLE: 10-32 Quadrex Truss Head Screw	
AUTH.				
MAT'L				
CAD DATA ONLY: DO NOT MANUALLY UPDATE			SCALE: 4:1	DWG: SCS87100 SHEET: 1 OF 1