



Des produits de qualité. L'excellence du service.

Compact Wall Rack Série RB-CW

Up to 60 lbs (27 kg) Weight Capacity



Features

- Available in 2U, 4U and 6U mounting heights.
- Includes a single pair of 10-32 threaded rack rails that can be positioned in four locations.
 - Three (3) positions in the front, one (1) position in the rear.
 - Starter pack of **SCREW1032-10** 10-32 rack screws.
- Removable cover panel for ease of equipment installation.
- Wall mount for 16" centers can be mounted with equipment positioned vertical or sideways.
- The rear of the rack includes a cutout for cable entry and lacing points for cable management.

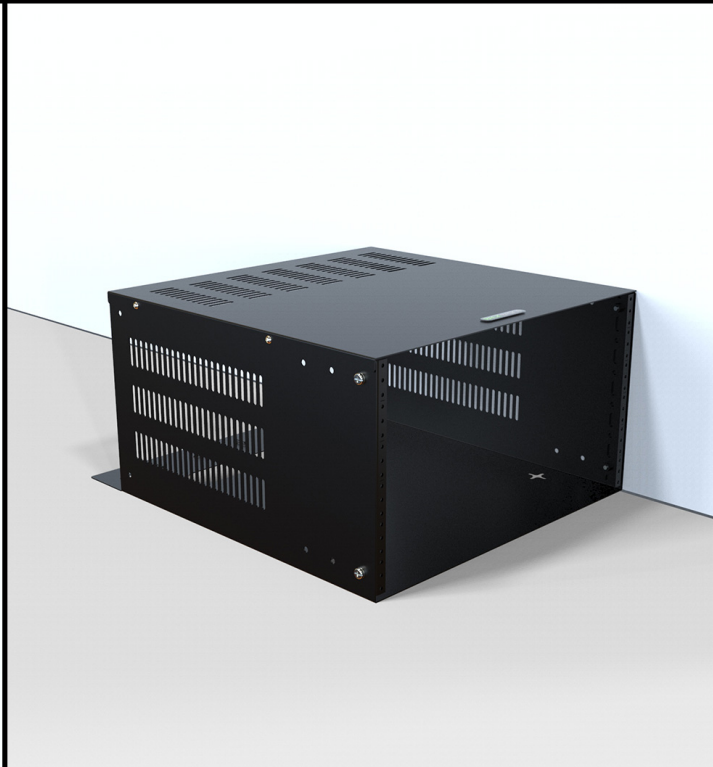
Specifications

- The housing and cover are constructed in 16-gauge steel.
- Mounting rails are constructed in 12-gauge steel.
- 60 lbs (27 kg) **load rating**.
- Finished in sand textured black powder paint.
- TAA-compliant for GSA Schedule purchases.
- RoHS Compliant.
- Manufactured in North America.



RACK BASICS®





Part No.	Overall Dimensions			Rack Units	Mounting Dimensions		
	Height	Width	Depth		Height	Width	Depth
RB-CW2	3.55	19.36	22.00	2U	3.50	19.00	20.00
RB-CW4	7.05	19.36	22.00	4U	7.00	19.00	20.00
RB-CW6	10.55	19.36	22.00	6U	10.50	19.00	20.00

Tags: Compact Sideways Mount Enclosures, Economical Low Profile Wall Rack, Side-Mount Cabinet - Les données sont sujettes à changement sans préavis

© 2022. Hammond Manufacturing Ltd. Tous droits réservés.

